



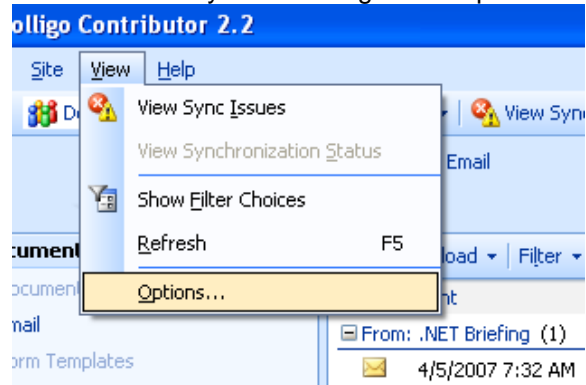
CONTRIBUTOR OPTIONS WINDOW

Introduction

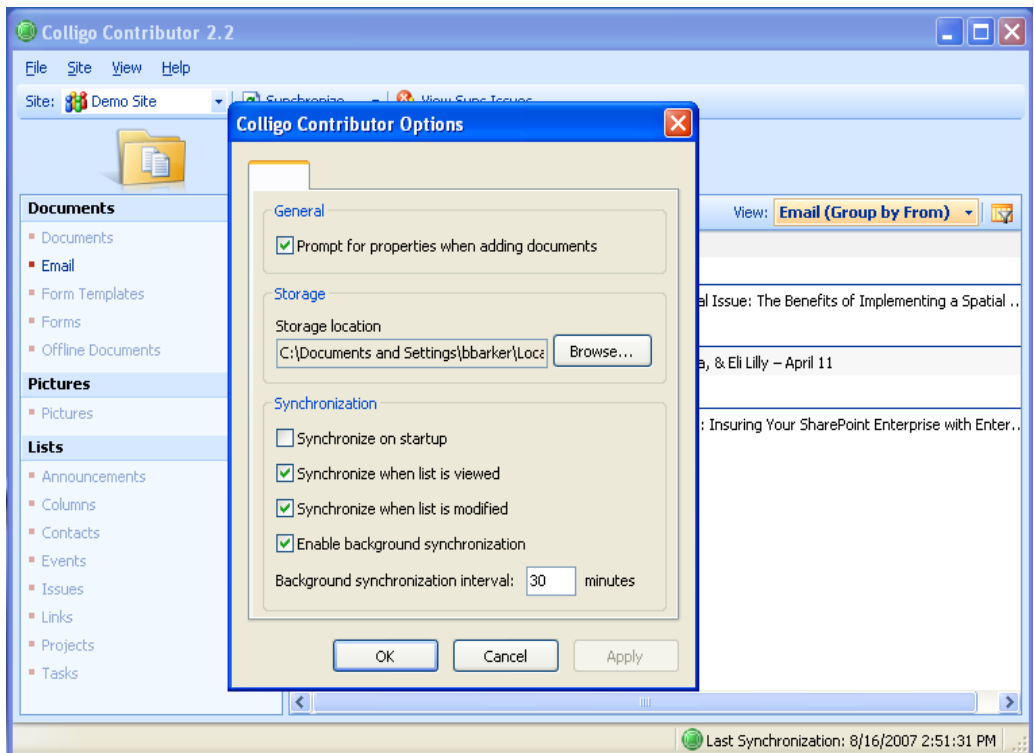
Colligo Contributor Version 2.2 for SharePoint provides quick access to many of the configuration options. This document introduces these Configuration Options.

Access the Options Window

Access to the Options Window is through the View Menu, as shown on the right.



The standard Options Window is displayed in the figure on the right.



Available Options

For details on all the configuration options supported by Contributor, please refer to the [Contributor Configuration Settings and Deployment Knowledge Base Article](#). Options accessed through the Configuration Options Window are detailed below.

| Description | Registry Path ¹ |
|---|---|
| Prompt for properties when adding documents | UserInterface\Config\EnableMetadataPrompt |
| Storage Location | General\StorageRoot |
| Synchronize on startup | Synchronization\SyncOnStartup |
| Synchronize when list is viewed | Synchronization\SyncOnNavigate |
| Synchronize when list is modified | Synchronization\SyncOnChange |
| Enable background synchronization | Synchronization\PeriodicSyncEnabled |
| Background synchronization interval | Synchronization\PeriodicSyncInterval |

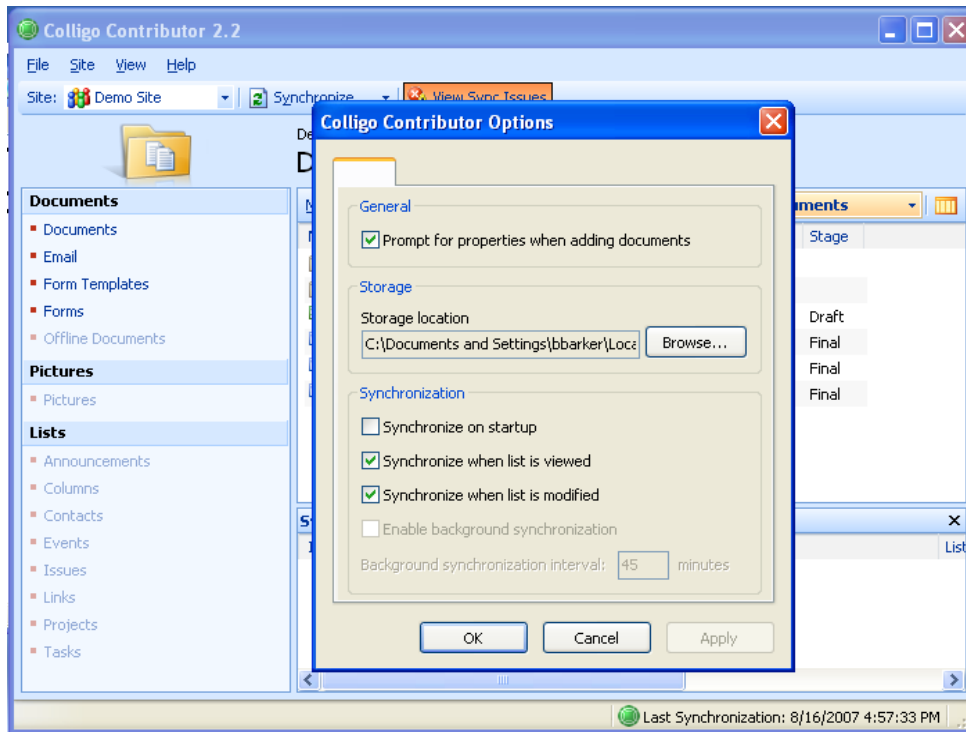
¹ As users change settings their changes are saved in the registry under the following key:
 HKEY_CURRENT_USER\Software\ColligoOfflineClient

Disabling Access to Individual Options

Each individual setting within the Options Window can be disabled centrally by IT. This is achieved by pushing out settings to the local-machine area of the registry. If the keys do not exist they should be created under the following key:

HKEY_LOCAL_MACHINE\SOFTWARE\ColligoOfflineClient

The figure below shows an Options Window with the ‘Enable background synchronization’ and ‘Background synchronization interval’ overridden by Central-IT.



Disabling access to the Options Window

Access to the Options Window can be disabled by Central-IT. This is achieved by creating a string value called “ShowOptionsWindow” with value “0” under the following key:

```
HKEY_LOCAL_MACHINE\Software\ColligoOfflineClient\UserInterface\Config>ShowOptionsWindow
```

Support

For further details on the new Configuration Options Window, please contact our technical specialists at support@colligo.com.